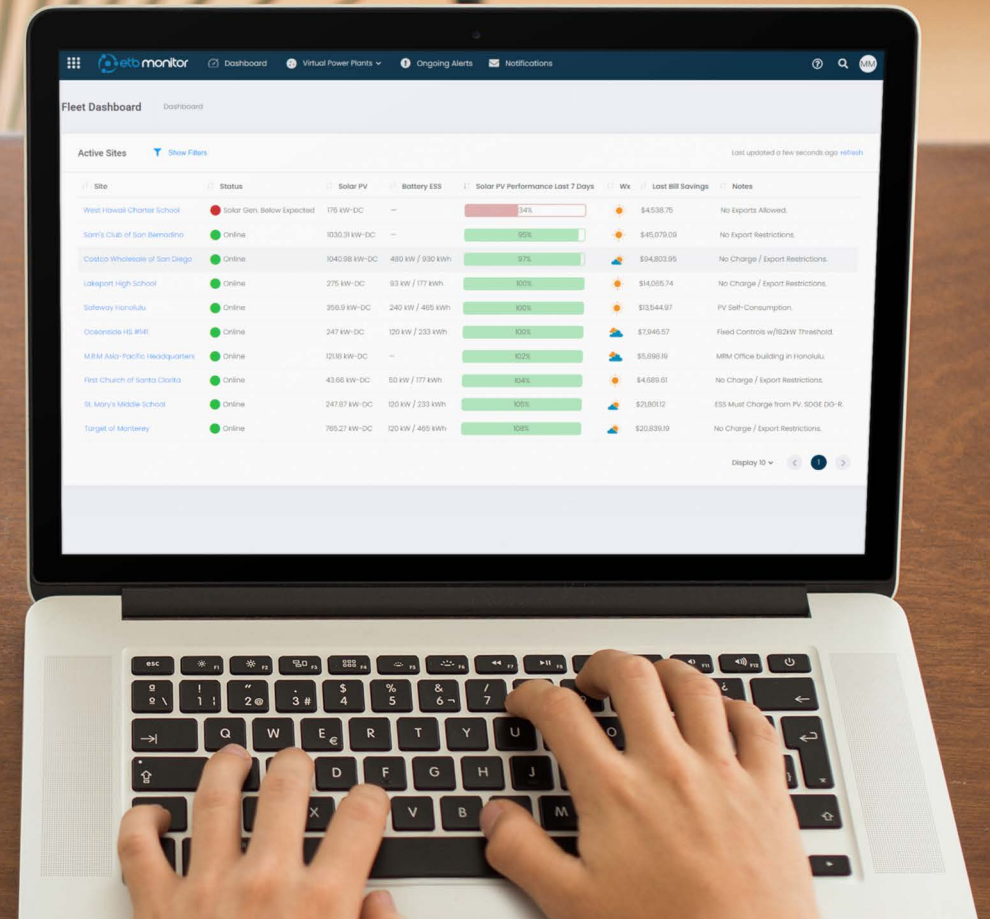


ETB Monitor

COMPLETE TRANSPARENCY OF YOUR SOLAR ASSETS

A robust solar monitoring platform that's directly connected to your modeling software for an end-to-end software experience



FEATURES & FUNCTIONALITY

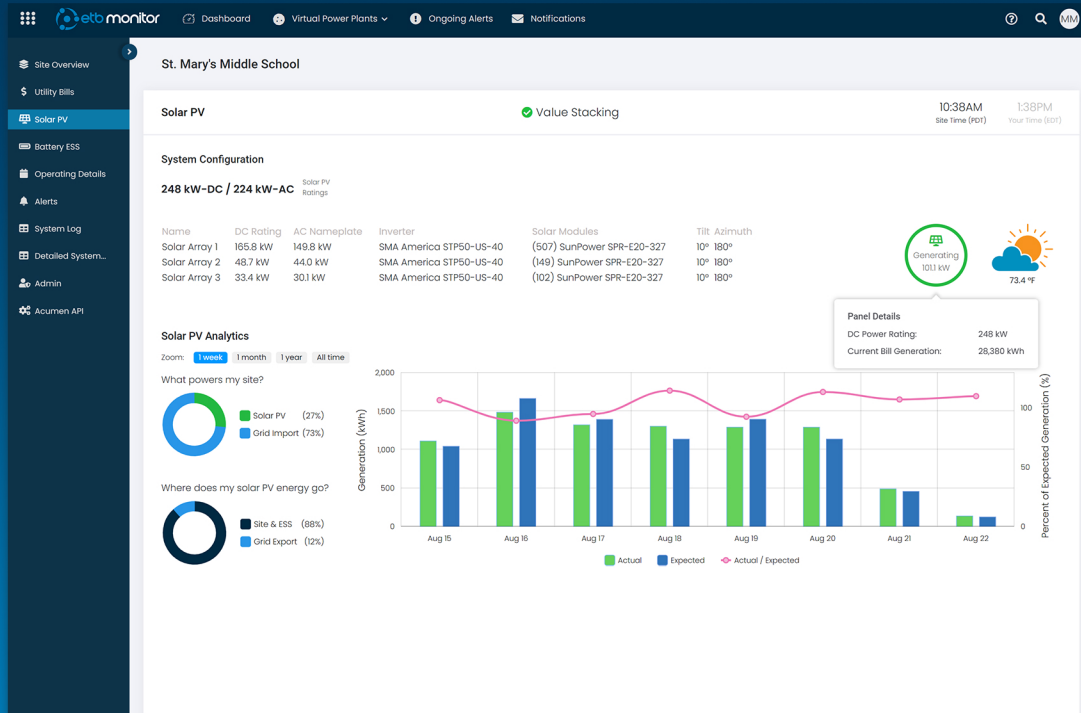


Figure 1: Visualize Actual vs Expected Solar Generation

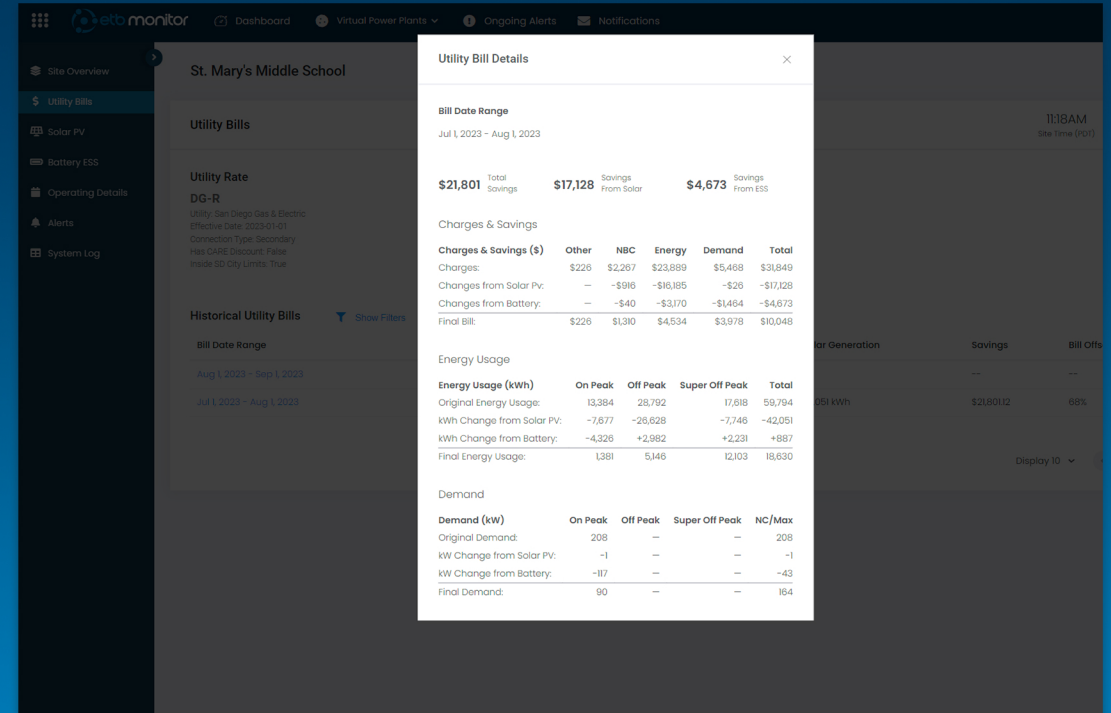


Figure 2: See Detailed Electric Bill Costs & Savings

✓ END-TO-END PLATFORM

End-to-end platform allowing you to quickly compare system performance to ETB Developer sales proposals.

✓ INTEGRATED PROPOSALS

Closeout proposals in ETB Developer and create sites within ETB Monitor using proposal data.

✓ TRUSTED BILL CALCULATIONS

Savings analysis powered from the same ETB Developer savings engine and extensive database of 100,000+ rates.

✓ SOLAR MONITORING

Compare actual solar generation to expected generation and see detailed electric bill savings.

END-TO-END PLATFORM



Energy Toolbase is an industry-leading platform providing a comprehensive solution for modeling and monitoring solar projects, allowing developers to deploy and track projects efficiently and accurately.

► MODEL ETB DEVELOPER

Software platform for modeling and proposing the economics of solar projects. Complete a proposal, close your lead as won, and seamlessly connect your site to ETB Monitor.

► MONITOR ETB MONITOR

Complete transparency into the real-time operation, performance, and savings of your solar projects. Compare analytics proposed in ETB Developer to actual performance.



TRUSTED BILL CALCULATIONS



etb developer Dashboards Leads Proposals Utility Rates More

Edit Energy Use Profile

Step 1 What type of energy usage data do you have?
Step 2 Enter Interval Data Info
Step 3 Enter Energy Use Profile Info

General Info **Utility Rate Details**

Energy Use Profile Name: (Whitepaper Ready - 250 kW) Office
Interval Data Start Date: 1/1/2018
Show True Up Details:

Rate Details
Rate: **AL-TOU**
Utility: SDG&E
Effective Date: 6/1/2022
Connection Type: Secondary
Has CARE Discount: False
Inside SD City Limits: True
[Show Rate Schedule Details](#)

| Bill Date Ranges | | Net Energy Use (kWh) | | | Max Demand (kW) | | Charges (\$) | | | | | |
|------------------|-----------|----------------------|---------|----------|-----------------|----------|--------------|---------|----------|----------|-----------|-----------|
| Start Date | End Date | Season | On Peak | Off Peak | Super Off Peak | NC / Max | On Peak | Other | NBC | Energy | Demand | Total |
| 1/1/2018 | 2/1/2018 | W1 | 9,216 | 28,573 | 10,597 | 194 | 123 | \$211 | \$1,408 | \$5,743 | \$9,835 | \$17,197 |
| 2/1/2018 | 3/1/2018 | W1 | 7,449 | 23,430 | 8,087 | 175 | 127 | \$211 | \$1,134 | \$4,840 | \$9,659 | \$15,644 |
| 3/1/2018 | 4/1/2018 | W2 | 8,871 | 17,421 | 18,995 | 137 | 127 | \$211 | \$1,318 | \$5,143 | \$8,400 | \$15,072 |
| 4/1/2018 | 5/1/2018 | W2 | 9,360 | 17,604 | 20,060 | 160 | 156 | \$211 | \$1,368 | \$5,345 | \$10,043 | \$16,968 |
| 5/1/2018 | 6/1/2018 | W3 | 10,126 | 32,185 | 10,692 | 203 | 170 | \$211 | \$1,542 | \$6,320 | \$11,894 | \$19,967 |
| 6/1/2018 | 7/1/2018 | S1 | 10,869 | 31,140 | 11,584 | 217 | 217 | \$211 | \$1,559 | \$5,762 | \$16,366 | \$23,898 |
| 7/1/2018 | 8/1/2018 | S1 | 12,715 | 30,875 | 12,374 | 208 | 208 | \$211 | \$1,628 | \$6,123 | \$15,688 | \$23,650 |
| 8/1/2018 | 9/1/2018 | S1 | 12,456 | 33,425 | 12,964 | 217 | 217 | \$211 | \$1,712 | \$6,366 | \$16,366 | \$24,656 |
| 9/1/2018 | 10/1/2018 | S1 | 10,945 | 30,374 | 14,854 | 250 | 250 | \$211 | \$1,635 | \$5,990 | \$18,855 | \$26,691 |
| 10/1/2018 | 11/1/2018 | S1 | 9,599 | 25,567 | 11,486 | 175 | 142 | \$211 | \$1,357 | \$5,019 | \$11,803 | \$18,391 |
| 11/1/2018 | 12/1/2018 | W1 | 8,638 | 23,393 | 11,528 | 151 | 146 | \$211 | \$1,267 | \$5,147 | \$9,441 | \$16,067 |
| 12/1/2018 | 1/1/2019 | W1 | 8,540 | 23,657 | 12,487 | 203 | 123 | \$211 | \$1,300 | \$5,230 | \$10,465 | \$17,206 |
| Total | - | - | 118,784 | 317,644 | 155,708 | - | - | \$2,530 | \$17,230 | \$66,829 | \$148,816 | \$235,405 |

GO BACK DELETE ENERGY USE PROFILE CANCEL SAVE

Charges After PV/ESS (\$)

| Other | NBC | Energy | Demand | Total |
|-------|-------|---------|---------|---------|
| \$211 | \$789 | \$2,204 | \$4,866 | \$8,071 |
| \$211 | \$509 | \$1,010 | \$3,925 | \$5,654 |
| \$211 | \$471 | \$476 | \$2,891 | \$4,049 |
| \$211 | \$440 | \$62 | \$2,820 | \$3,532 |
| \$211 | \$570 | \$546 | \$3,612 | \$4,939 |
| \$211 | \$529 | \$787 | \$4,370 | \$5,896 |
| \$211 | \$560 | \$776 | \$4,472 | \$6,020 |

View a precise breakdown of utility rate charge types (e.g., energy, demand, NBC's, other) based on your customer's rate tariff

etb monitor Dashboard Virtual Power Plants Ongoing Alerts Notifications Green Button

Utility Bill Details Apr 1, 2024 - May 1, 2024

Bill Overview
Total Savings: **\$69,206**

Your Rate Tariff: **DG-R**
Utility: San Diego Community Power
Effective Date: 2023-02-01
Connection Type: Secondary
Inside SD City Limits: True
Rate Type: PowerOn

Your Rate Tariff Without Solar + Battery: **AL-TOU**
Utility: San Diego Community Power
Effective Date: 2023-02-01
Connection Type: Secondary
Inside SD City Limits: True
Rate Type: PowerOn

Energy Usage
Bar chart showing Imports (kWh) and Exports (kWh) for On Peak, Off Peak, and Super Off Peak periods. Legend: Original (grey), After Solar PV (green), After Solar PV & Battery ESS (orange).

Charges and Savings
Donut chart showing 38% Bill Reduction. Legend: Solar Savings (\$29,653.57), ESS Savings (\$14,617.28), Rate Switch Savings (\$24,934.67), Remaining Bill (\$115,071.01).

Detailed Bill Breakdown

| Charges & Savings (\$) | Other | NBC | Energy | Demand | Total |
|------------------------|-------|----------|-----------|-----------|-----------|
| Original Bill: | \$811 | \$15,113 | \$77,219 | \$91,141 | \$184,285 |
| Solar PV: | - | -\$4,508 | -\$25,145 | - | -\$29,654 |
| Rate Switch: | - | - | +\$34,722 | -\$59,657 | -\$24,935 |
| Battery ESS: | - | -\$428 | -\$11,848 | -\$2,341 | -\$14,617 |
| Final Bill: | \$811 | \$10,177 | \$74,949 | \$29,143 | \$115,079 |

| Energy Usage (kWh) | On Peak | Off Peak | Super Off Peak | Total |
|------------------------|---------|----------|----------------|----------|
| Original Energy Usage: | 144,155 | 101,405 | 153,143 | 398,703 |
| Solar PV: | -23,047 | -52,962 | -80,835 | -156,844 |
| Battery ESS: | -27,789 | -2,208 | +35,044 | +5,047 |
| Final Energy Usage: | 93,319 | 46,235 | 107,352 | 246,906 |

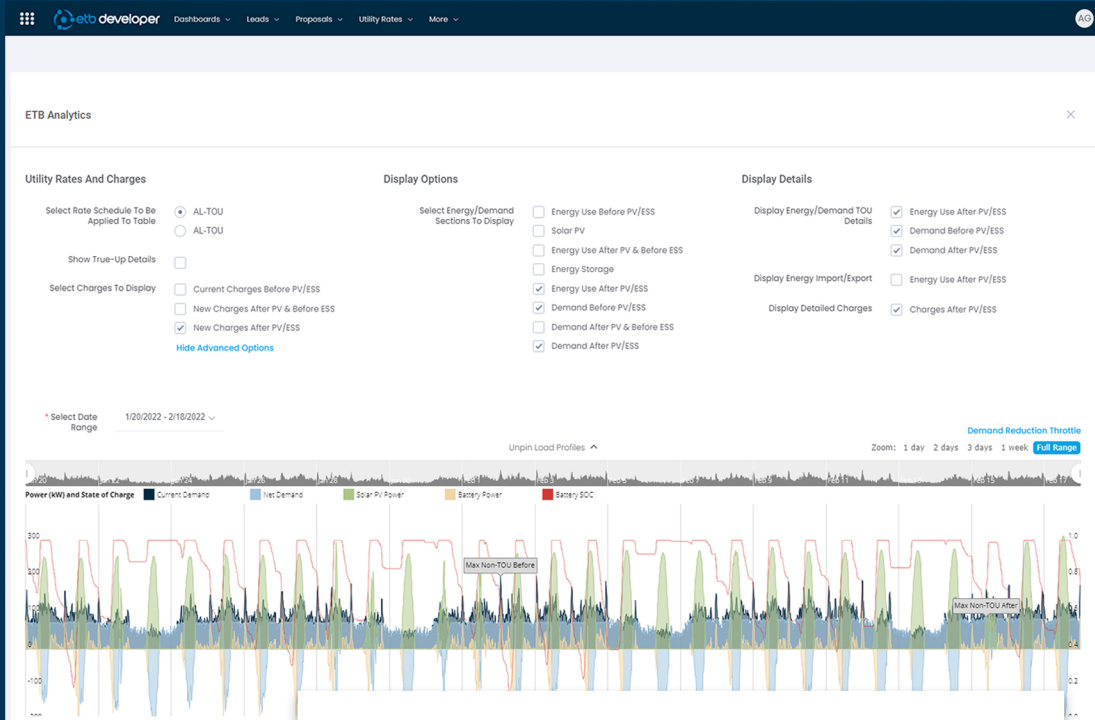
| Demand (kW) | NC/Max | On Peak |
|------------------|--------|---------|
| Original Demand: | 1,385 | 1,385 |
| Solar PV: | - | - |
| Battery ESS: | -103 | -103 |
| Final Demand: | 1,282 | 1,282 |

Detailed Bill Breakdown

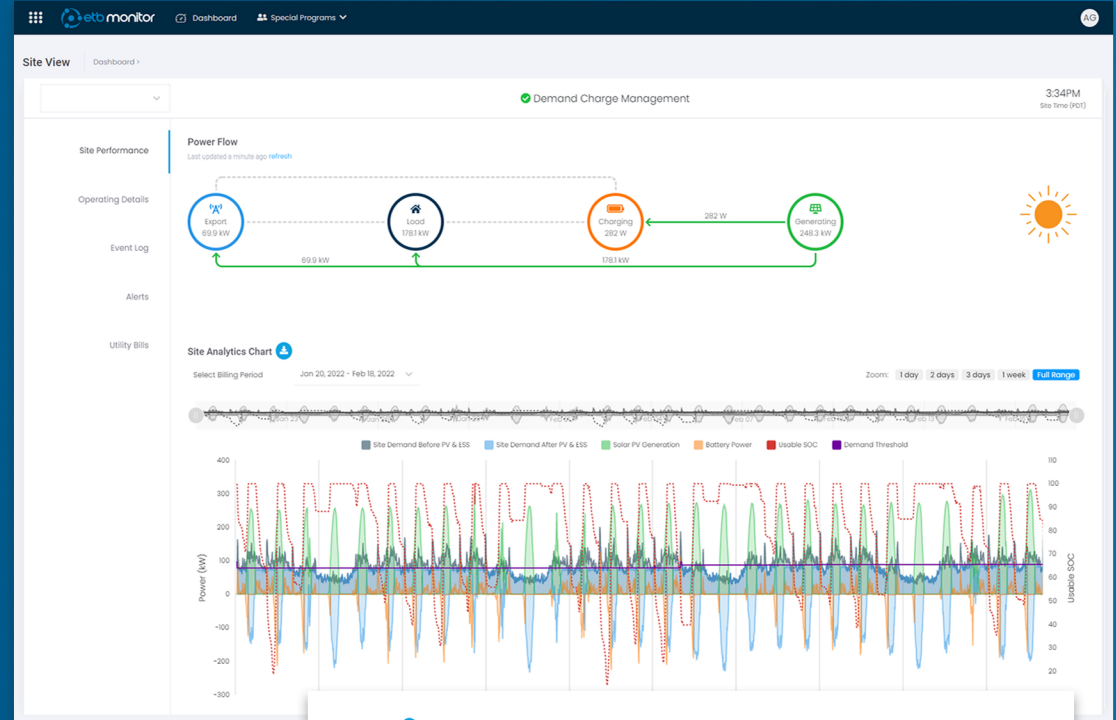
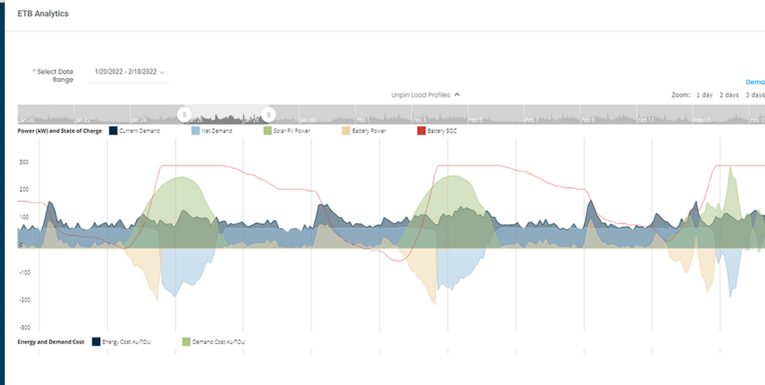
| Charges & Savings (\$) | Other | NBC | Energy | Demand | Total |
|------------------------|-------|----------|-----------|-----------|-----------|
| Original Bill: | \$811 | \$15,113 | \$77,219 | \$91,141 | \$184,285 |
| Solar PV: | - | -\$4,508 | -\$25,145 | - | -\$29,654 |
| Rate Switch: | - | - | +\$34,722 | -\$59,657 | -\$24,935 |
| Battery ESS: | - | -\$428 | -\$11,848 | -\$2,341 | -\$14,617 |
| Final Bill: | \$811 | \$10,177 | \$74,949 | \$29,143 | \$115,079 |

View a transparent breakdown of avoided cost of your operational solar systems in the field for each billing period

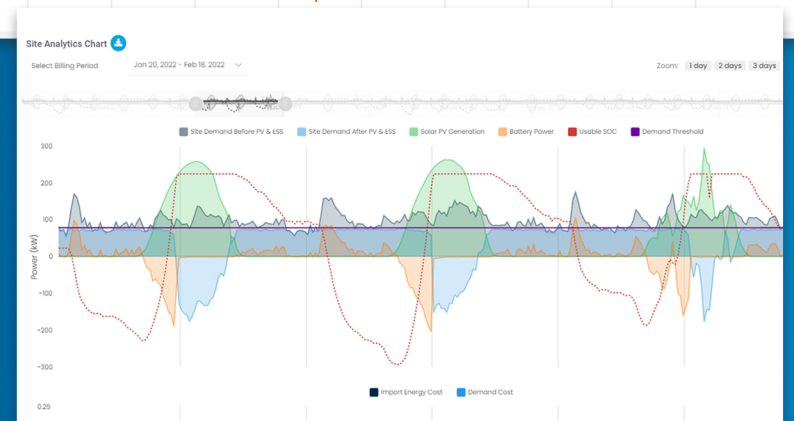
INTEGRATED PROPOSALS



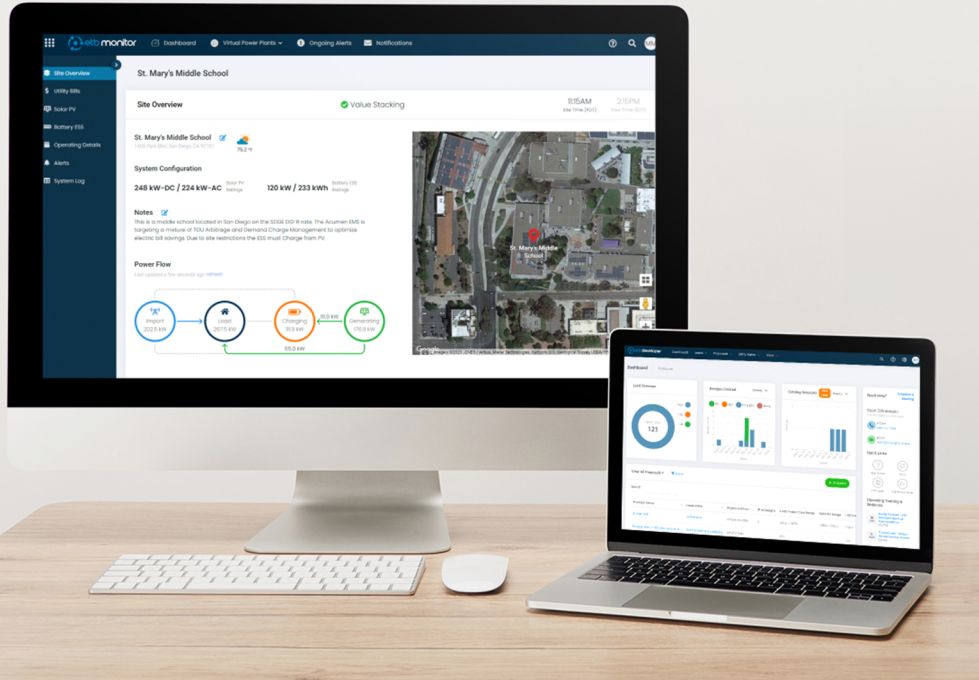
Visualize interval meter data (e.g., site load, PV production, ESS dispatch) during the sales & modeling process to precisely quantify cost & bill savings



Transparently view site metered data via our visualization tool to understand system performance & validate the quantified avoided cost of operational systems



SOLAR MONITORING PRICING



Example of ETB Monitor Pricing

Perpetual License
(No \$/kW Fee)

5-Year
Subscription

Hardware
Kit

\$1,000

\$2,340

\$1,082

ALL IN COST = \$4,422

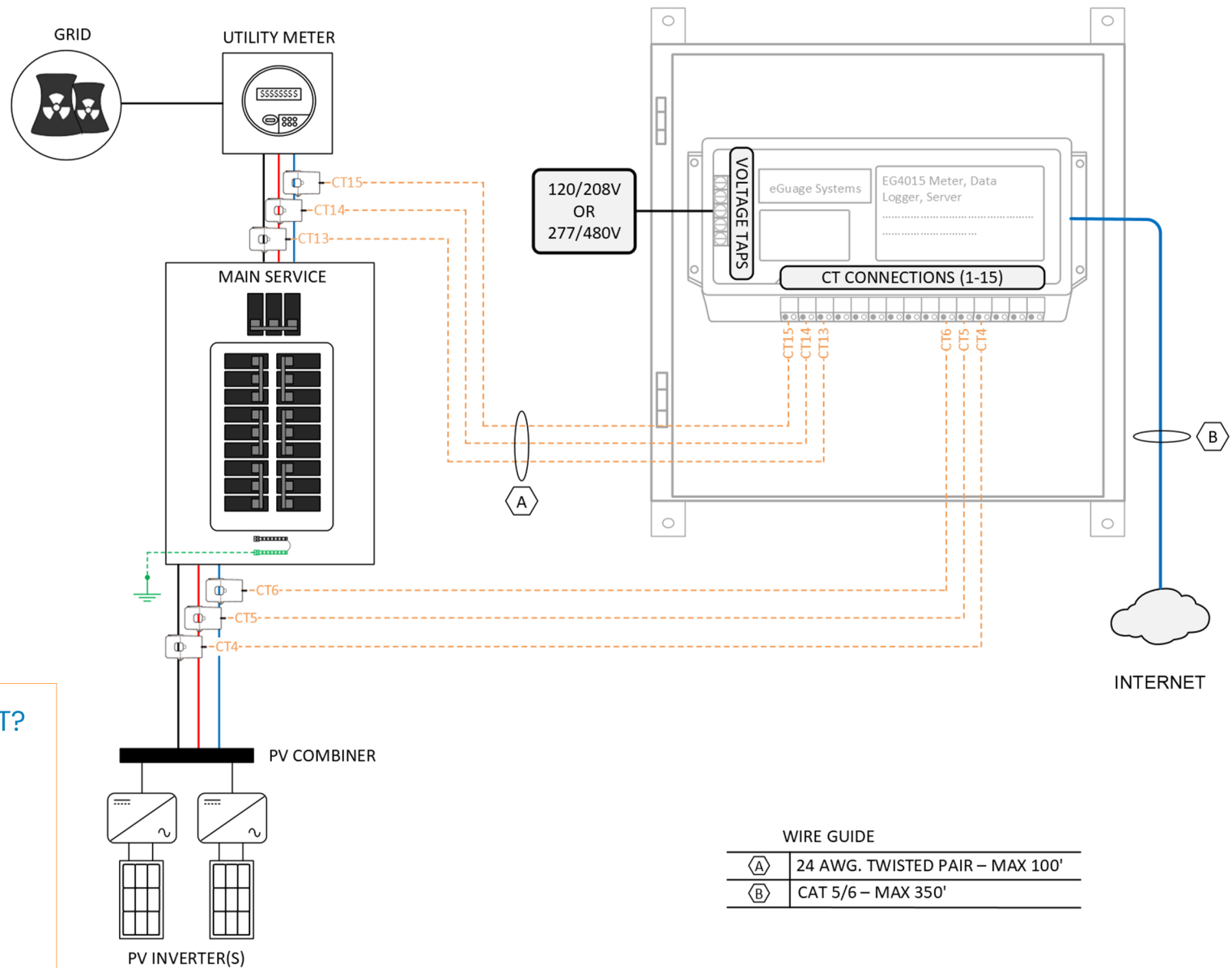
TERMS & CONDITIONS

- ▶ Hardware costs can vary
- ▶ Additional CTs and metering available if required

**The following pages show the three most common scenarios that we see when metering sites, along with the relevant hardware costs.*

SCENARIO 1: STANDARD KIT

Hardware Cost: \$1,082



WHEN TO CHOOSE THE STANDARD KIT?

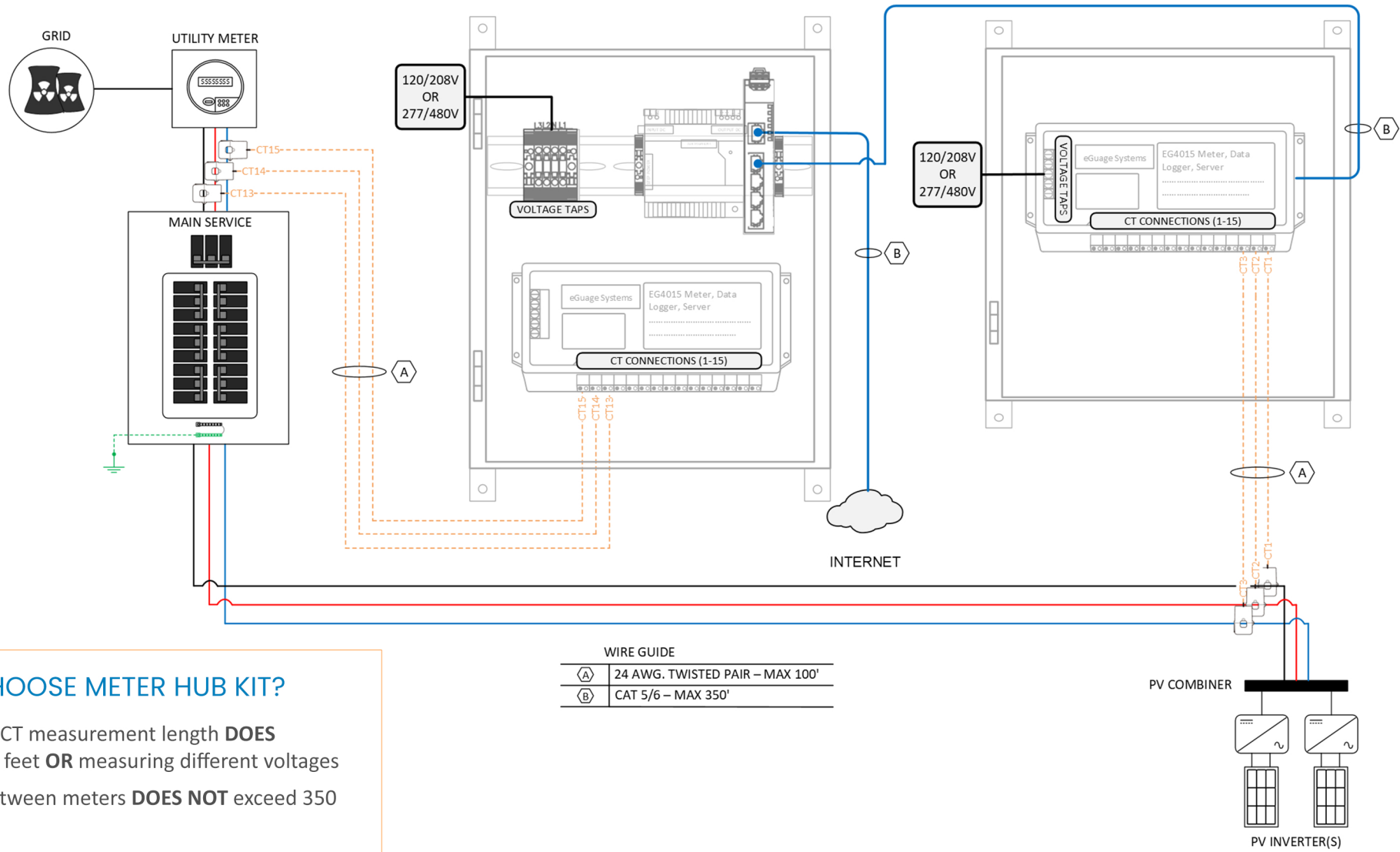
- ▶ CT measurement length **DOES NOT** exceed 100 feet to the measured locations
- ▶ Both measurement points have the same voltage
- ▶ Host customer is providing internet
- ★ 5-year LTE Subscriptions available for \$2,980

WIRE GUIDE

| | |
|-----|---------------------------------|
| (A) | 24 AWG. TWISTED PAIR – MAX 100' |
| (B) | CAT 5/6 – MAX 350' |

SCENARIO 2: METER HUB KIT

Hardware Cost: \$2,375



WHEN TO CHOOSE METER HUB KIT?

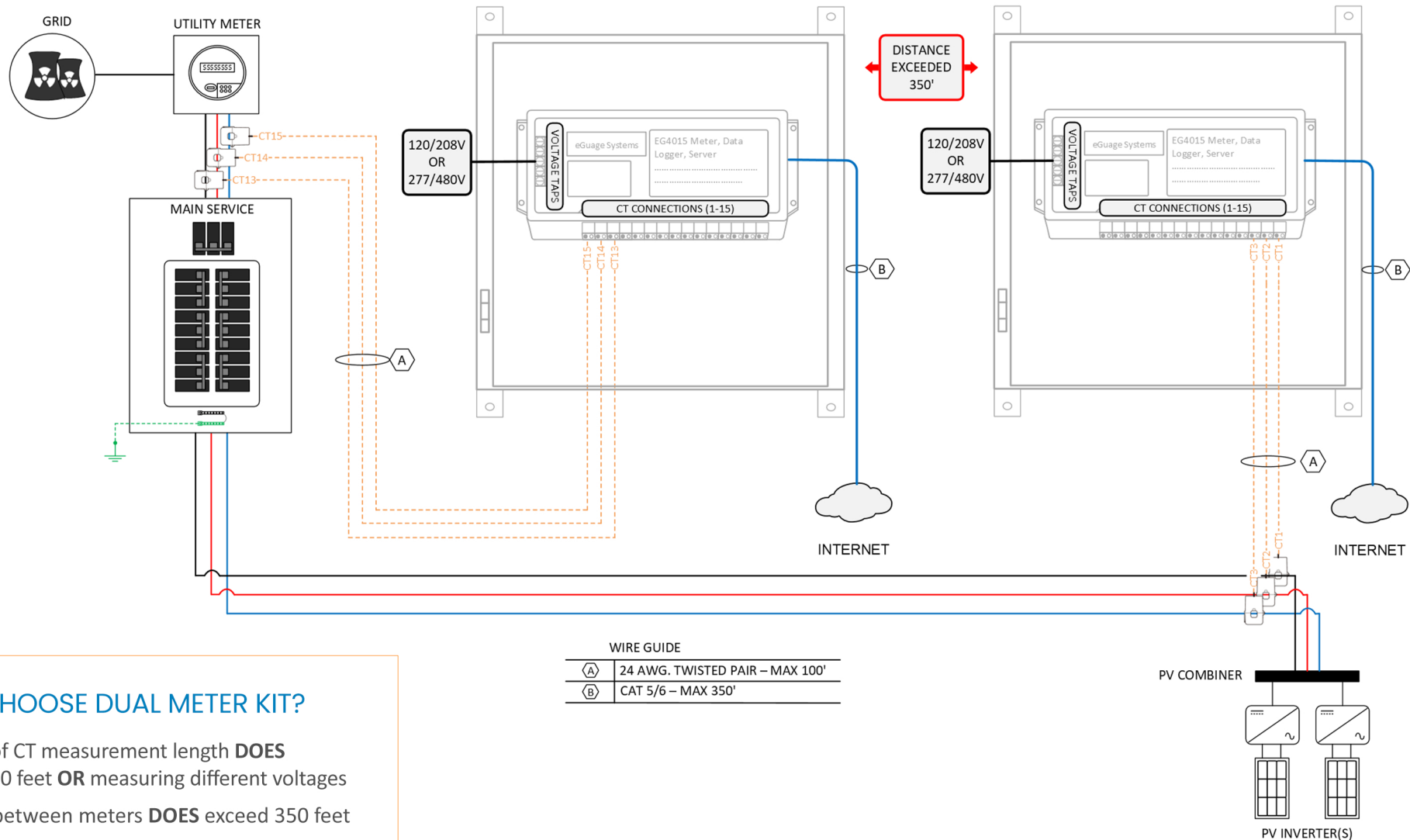
- ▶ Distance of CT measurement length **DOES** exceed 100 feet **OR** measuring different voltages
- ▶ Distance between meters **DOES NOT** exceed 350 feet
- ▶ Host customer is providing internet
- ★ 5-year LTE Subscriptions available for \$2,980

WIRE GUIDE

| | |
|-----|---------------------------------|
| (A) | 24 AWG. TWISTED PAIR – MAX 100' |
| (B) | CAT 5/6 – MAX 350' |

SCENARIO 3: DUAL METER KIT

Hardware Cost: \$1,523



WHEN TO CHOOSE DUAL METER KIT?

- ▶ Distance of CT measurement length **DOES** exceed 100 feet **OR** measuring different voltages
- ▶ Distance between meters **DOES** exceed 350 feet
- ▶ Host customer is providing internet
- ★ *Dual 5-year LTE Subscriptions available for \$5,960*